

SEG LIGHTING BOX GUIDE

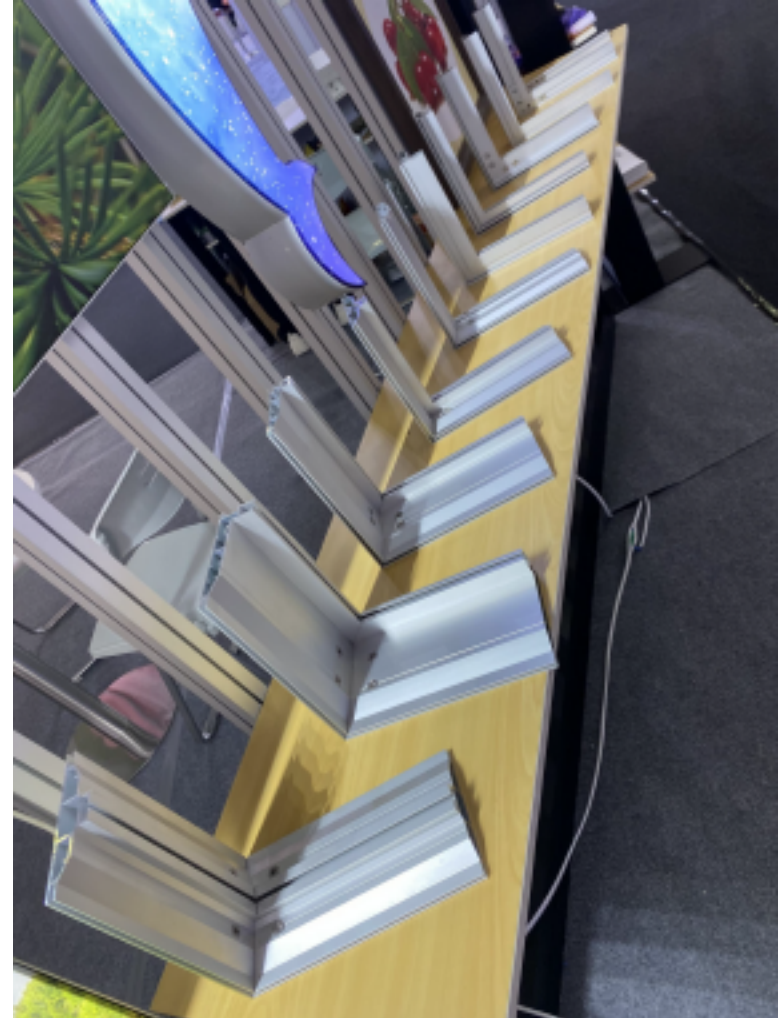
From Green Expomax



E-mail: sales@green-expomax.com

ALUMINUM FRAME

- 1 We have hundreds of aluminum profiles for doing lighting box. It has single and double sides division.
- 2 The aluminum profile whole length is 6m per piece. We can cut them as your side and delivery; of course, we can install a frame and delivery as finished product. But this way it will occupies package space.
- 3 The size of our fabric system profile is mainly in double numbers. For example the thickness is : 40mm,60mm,80mm,100mm,120mm,180mm..
- 4 The frame size can be customized, if the frame size over 3x6m, we have straight connector to join the profile until it can install bigger frame.

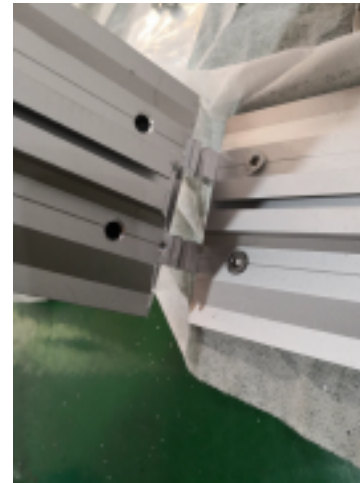


ACCESSORIES FOR FRAME:

1. 180degree Straight connector for joining the profile enough long as your requirements. One piece profile cut 2pieces need to use 2 or 4PCS straight connectors to join.



2. 90degree corner joint to install the frame by square or rectangle. One frame use 4 or 8PCS corner joints according to profiles' different design.



3. Tool

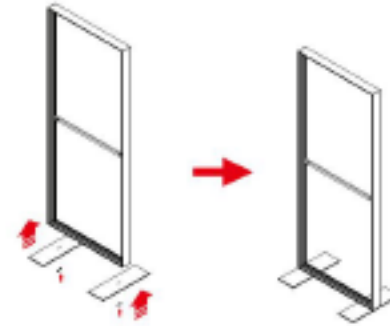


ACCESSORIES FOR FRAMES

4. Support Beam. If the frame size is 3X6m or the span is more bigger. We can use 37mm Or 40mm beam to support it and let frame is more strong. The support beam can install by vertical or horizontal.



5. Bottom base. If your light box stand alone ,it needs bottom base. If your light box is single side and mount on the wall, then it won' t use bottom base. This is ordered as client' s requirements.



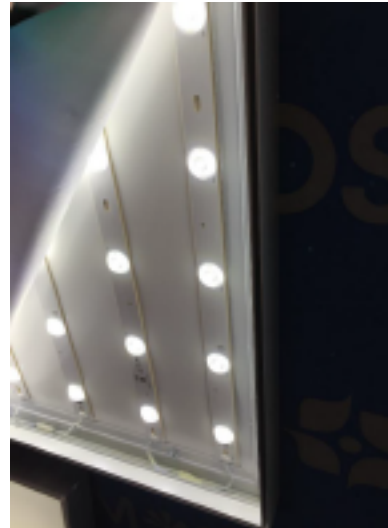
The support beam size' s length need to calculate frame.

LED Lighting

So far, there are 3 types to choose: We think which led light used it depends on the frame size. Because it considers the cost.



- 1 LED Strip lighting. It has shine by the distance under 3m. It installs in the groove of aluminum profile. It used much when double sides light box.



- 2 LED back wall strip. The size should order as your frame size. So this led strip size is fixed.



- 3 Module led lighting ---One module has 8PCS. You can place it anywhere in the frame. It mainly uses for the backwall light box or some shaped light box.

Fabric

1

UV printing. It mainly uses for light box screen.

Name: Pearl cloth

Category: back lamp, light box cloth

Gram weight: 120 + 5GSM

Main material: 100% polyester fiber

Fire rating: European M1 class, higher than B1 grade.

Printing mode: suitable for UV, solvent, weak solvent, LATEX printing on coated surface. Thermal transfer printing at non coating level.

We don't produce fabric by ourselves, we have cooperated company to supply the fabric screen for us. Our professional work is doing all constructions of frames with lighting so get a wonderful view! We did for Dior brand and some stores project..

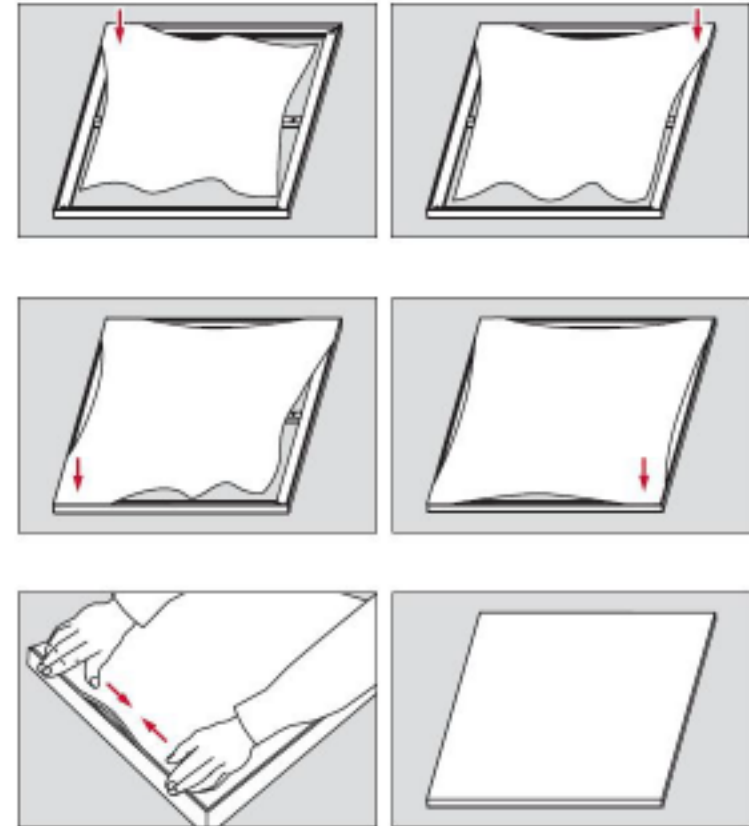
Note: This pearl fabric can't pack by folded. It packs by roll. Of course you can source fabric screen at your location too.



Silicon edge clip

We use 3X11mm or 3X14mm silicon clip for fabric prints.

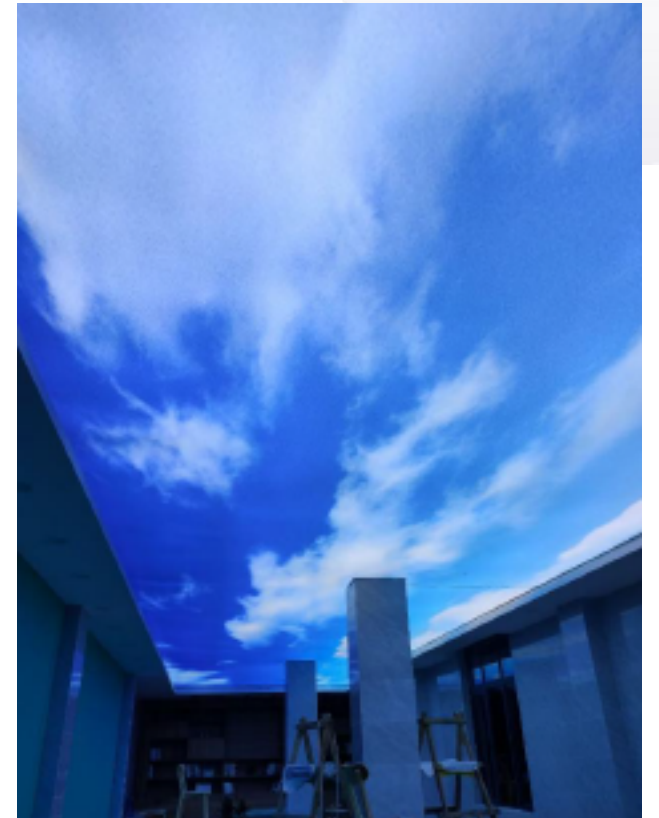
Fabric installation way like right picture.



Ceiling light box

SEG ceiling light box which use:

1. It has wooden frame at the ceiling then install our aluminum clip on it.
2. Make a cube ceiling light box then hang on the air through steel wire.



Thanks for your watching!